



Future Dreaming 2024

The Torch



This is an Easy Read resource about
the 2024 Future Dreaming exhibition

Future Dreaming



The Torch office opens as a public gallery for one exhibition a year, Future Dreaming.



The exhibition opens on Friday 25 October 2024 at 1pm and closes on Saturday 23 November 2024 at 3pm.



The exhibition is also available to view online at:

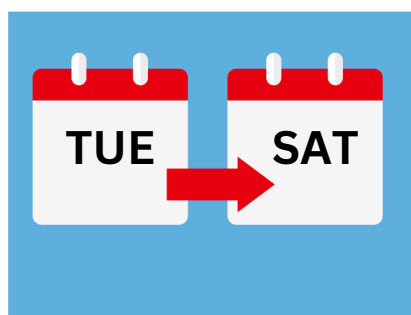
<https://thetorch.org.au/exhibition/future-dreaming-2024>

The Gallery



The Gallery located at The Torch, Wurundjeri Country, 146 Elgin Street, Carlton, Victoria, 3053.

There are no step-free entrances to the gallery. Please contact us if you need more information.

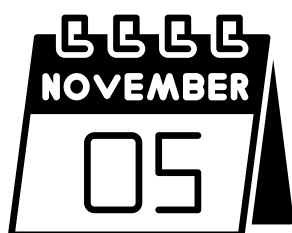


The gallery is open:

- Tuesday to Friday from 1pm to 5pm.
- Saturdays from 11am to 3pm.



The gallery will be closed on the Public Holiday on Tuesday November 5.



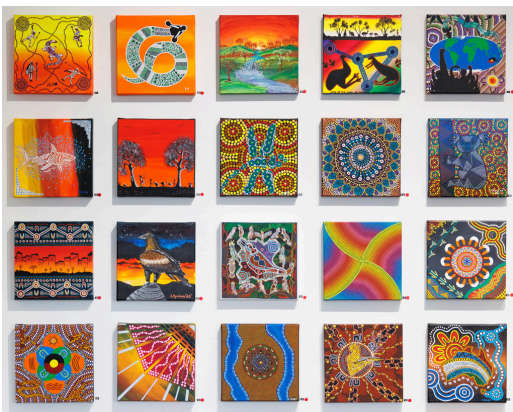
Exhibition Information



The Torch supports First Nations artists in prisons and post-release in Victoria to explore their Indigenous culture and identity through practising art.



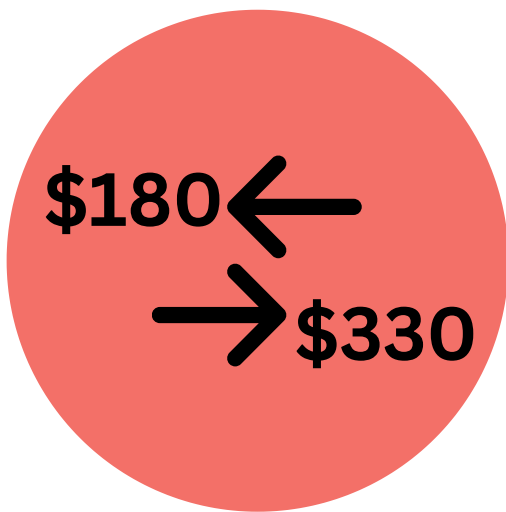
Future Dreaming 2024 is an exhibition of 250 artworks created by Torch artists incarcerated in Victorian prisons in 2024.



Each painting is 30 x 30cm. We asked our artists to explore what possibilities await them on their release from Prison and to respond to the theme 'Future Dreaming.'



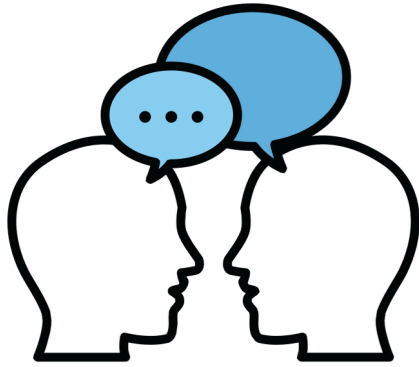
Many people visit the gallery to see the art.



Artworks are for sale and affordably priced between \$180 and \$330.



The Torch takes no commission on sales, meaning that 100% of the proceeds of each sale go directly to the artist.



Please contact us if you want to check that the gallery is open before you visit.



Service animals are welcome in the gallery.



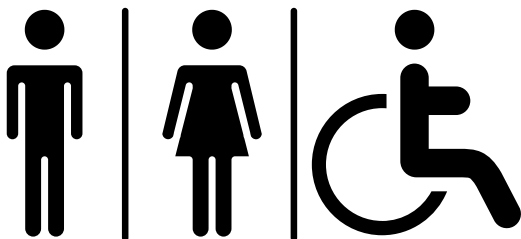
The gallery is usually a quiet place, but can be noisy if there are a lot of people. We recommend people with hearing sensitivities bring hearing protection for when it is noisy.



There is an all-gender ambulant toilet located on the same level as the gallery.

The door to the toilet has a small pull handle which may be difficult for someone with hand dexterity issues to use.

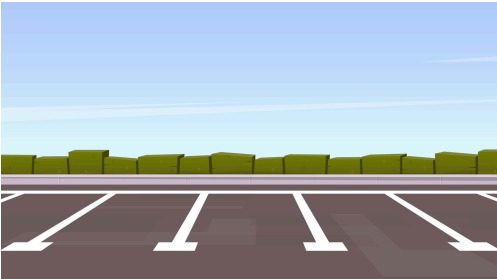
There are no accessible toilets on the premises.



The closest public accessible toilet is in Lygon Court shopping mall one block away from The Torch Gallery.

Getting Here

Parking:



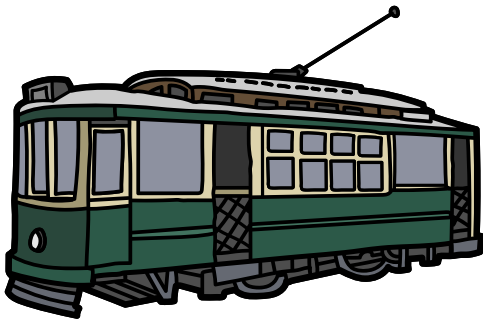
You can park on the street. On street parking is available on Elgin Street and the surrounding area, however it is limited.



You can park in a car park. The nearest available is Lygon Court car park located at 333 Drummond St Carlton between Faraday and Elgin streets, one block away from The Torch Gallery.



There is no accessible carpark on site. The closest accessible parking spot can be found on Drummond Street between Faraday Street and Elgin Street one block away from The Torch Gallery.



Tram:

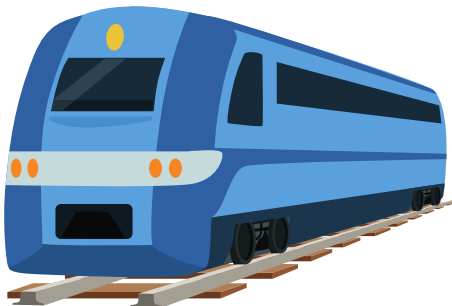
- An accessible tram super stop is on the corner of Lygon and Elgin Streets, one block away from The Torch Gallery and services tram routes 1 and 6.
- Route 96 accessible tram super stops are also two blocks away on Nicholson Street.

Use tramTRACKER® app to check the next three trams at your stop. The wheelchair icon indicates low-floor tram.



Bus:

- Routes 200 and 207 run along Lygon Street, one block away from The Torch Gallery.
- Routes 250 and 251 run along Rathdowne Street, half a block away from the Torch Gallery.



Train:

Melbourne Central Railway Station which is approximately a 26 minute walk to and from The Torch. Accessible station access is via lift, train platform access is via portable ramp and raised platform.

Contact information



Email: info@thetorch.org.au



Call: (03) 9042 1236



Visit our website for more information
www.thetorch.org.au



Follow us on instagram
[@thetorchvic](https://www.instagram.com/thetorchvic)



Follow us on facebook
[@thetorchproject](https://www.facebook.com/thetorchproject)