



Confined 17

The Torch

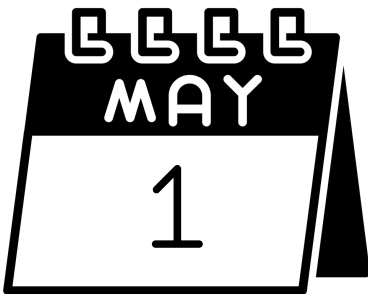


This is an Easy Read resource about
the 2026 Confined 17 exhibition

Confined 17



The Torch holds an exhibition called Confined every year. This year is Confined 17. The exhibition series serves as a reflection on the over-representation of First Nations Australians in our criminal legal system, underscoring the urgent need for change.



The exhibition opens on Friday 1 May 2026 at 10am and closes on Sunday 14 June 2026 at 5pm.



The exhibition is also available to view online at:

<https://thetorch.org.au/exhibition/confined-17/>

The Gallery

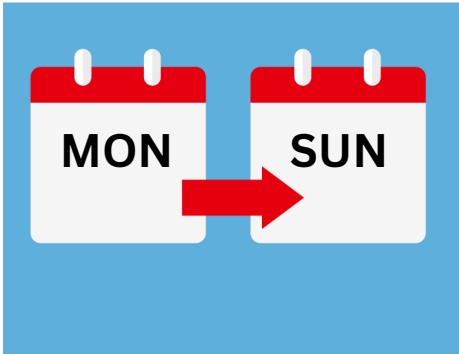


Glen Eira City Council Gallery is on the ground floor of Glen Eira Town Hall. The Town Hall is at the corner of Glen Eira Road and Hawthorn Road in Caulfield, on Boon Wurrung/Bunurong Country.



You can enter the Gallery through the front entrance on Glen Eira Road or from the Council's car park entrance and service centre off Glen Eira Road. The Gallery is wheelchair accessible. Entry is free.

The Gallery

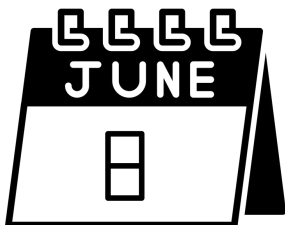


The gallery is open:

- Monday to Friday
10am–5 pm
- Saturday to Sunday
1pm–5pm



The gallery will be closed
on the Public Holiday on
Monday June 8.



Exhibition Information



The Torch supports First Nations artists in prisons and post-release in Victoria to explore their Indigenous culture and identity through practising art.



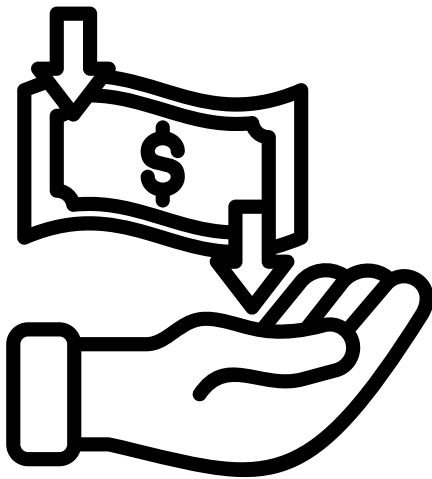
Confined 17 2026 is an exhibition of 497 artworks by 424 First Nations artists whose lives have been impacted by the criminal legal system in Victoria.



There are a mixture of paintings and objects on display all exploring different themes allowing artists to share their stories, culture and lived experiences through art.



Many people visit the gallery to see the art.



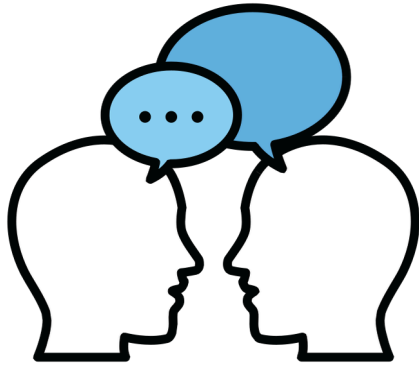
All artworks are for sale. The Torch takes no commission on sales, meaning that 100% of the proceeds of each sale go directly to the artist.



There are some public programs during the exhibition, such as talks, live painting and workshops.

Bookings are required for most programs and can be made on The Torch's website:

<https://thetorch.org.au/exhibition/confined-17/>



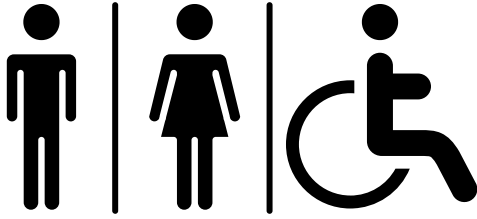
Please contact us if you want to check that the gallery is open before you visit.



Service animals are welcome in the gallery.



The gallery is usually a quiet place, but it can be noisy if there are a lot of people. We recommend people with hearing sensitivities bring hearing protection for when it is noisy.



There is an all-gender accessible toilet located on the same level as the gallery.



There are also ambulant female and male toilets located on the same level as the gallery.

Female Ambulant Toilet



Male Ambulant Toilet

Getting Here



Parking:

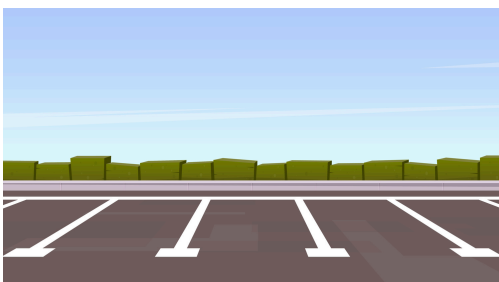
There is parking available at the Council carpark at the Glen Eira Town Hall.



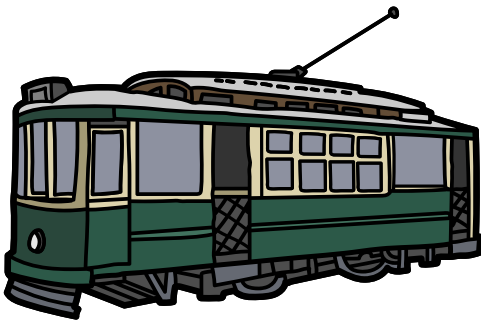
There are two entrances to the car park. The closest car park entry to the gallery is at 420 Glen Eira Road, Caulfield. There is another car park entry on Hawthorn Road.



There are three accessible parking spaces in the car park at Caulfield Town Hall, Glen Eira City Council.



You can park on the street. On street parking is available on Glen Eira and Hawthorn Roads, and the surrounding area, however it is limited.



Tram:

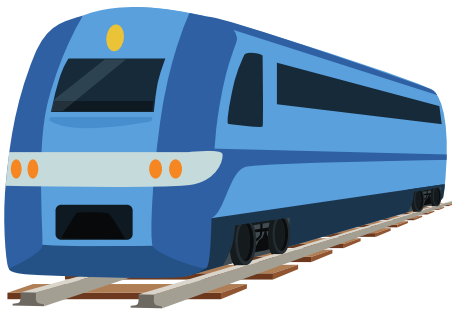
- You can take the route 64 tram to stop 54 (Glen Eira Rd/Hawthorn Rd). Glen Eira City Council Gallery is a one-minute walk away
- Currently route 64 doesn't use low-floor trams and is not accessible if you use a wheelchair.

Use tramTRACKER® app to check the next three trams at your stop. The wheelchair icon indicates low-floor tram.



Bus:

- You can take the bus route 623 bus to Glen Eira City Hall/Glen Eira Rd, Caulfield. Glen Eira City Council Gallery is a one minute walk away.
- CDC Victoria services this route. To schedule a low-floor bus for you. You can call them on 8545 6000.



Train:

- You can take the train to Ripponlea or Caulfield stations, which are the closest options, approximately a 30-minute walk to and from Glen Eira City Council Gallery.
- Accessible station access is via lift, train platform access is via portable ramp and raised platform.

Contact Information



Email: info@thetorch.org.au



Call: (03) 9042 1236



Visit our website for more information

www.thetorch.org.au



Follow us on instagram

[@thetorchvic](https://www.instagram.com/thetorchvic)



Follow us on facebook

[@thetorchproject](https://www.facebook.com/thetorchproject)